

logitech

SOLUTIONS FOR BUSINESS: PERSONAL WORKSPACE



THE NEW PERSONAL WORKSPACE

As the workforce redistributes into a more lasting hybrid model, a one-size-fits-all workspace solution does not exist. That's why Logitech creates human-centered technology solutions that help people create and collaborate effectively from anywhere.

Our complete personal workspace solutions will help your team do their best work while enjoying a more flexible and satisfying work experience.

WHAT SETS US APART

Help your employees get things done from anywhere, with more security, greater flexibility, and increased comfort. At home, in the office, or on the go, employees are better equipped for the demands of work with Logitech tools.



GLOBAL AVAILABILITY

Our products work seamlessly across different platforms and are rigorously tested and compatible with or certified by *Microsoft*, *Zoom*, *Google*, and *Apple*. This makes global deployment seamless and reduces IT help desk involvement.



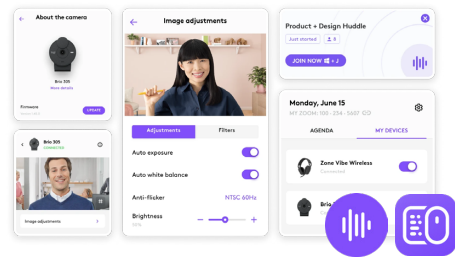
SECURITY

Logi Bolt technology delivers a high-performance, secure wireless connection by combining *Bluetooth*® Low Energy wireless technology Security Mode 1, Security Level 4 with additional Logitech security features to reduce vulnerability when devices are paired to a Logi Bolt USB receiver.



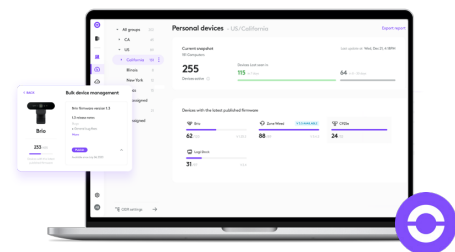
GLOBAL PRO SUPPORT & WARRANTY

Logitech PRO support gives access to technical support globally. Furthermore, we offer a global warranty with advanced replacement warranty¹. All Logitech B2B products are also offered with a 2-year hardware warranty globally.



DEVICE CUSTOMIZATION

Predefined customizations and enhanced experiences are available with accompanying software (Logi Tune and Logi Options+), which enables users to optimize their devices based on their specific needs, set default actions for those devices, and streamline repetitive tasks.



REMOTE MANAGEMENT

With Logitech Sync, IT admins gain insights into personal device usage while ensuring compatibility and enhancing product performance through firmware updates for Logitech devices².

WHAT SETS US APART

OUR COMMITMENT TO SUSTAINABILITY



DESIGNING A POSITIVE FUTURE

Sustainability is core to every design decision, from the moment raw materials are sourced to the product's end of life. Logitech actively integrates Design for Sustainability (DfS) principles into new product development and product updates.



NEARLY
2 IN 3
LOGITECH PRODUCTS USE
SECOND LIFE MATERIALS

LOGITECH'S NEXT LIFE PLASTICS PROGRAM

BENEFITS OF NEXT LIFE PLASTICS:

- Requires **less water, fossil fuels and energy** to produce
- Made from **items that consumers recycle** every day
- The same aesthetics and product performance you love for **less carbon impact**

CIRCULARITY

To achieve circularity, we focus on circular design, circular materials, and responsible manufacturing. We are also extending product life by recovering products and recycling materials.

CARBON NEUTRALITY AND CLARITY

We prioritize carbon reductions across Logitech and its products. Because of the urgency to address atmospheric emissions that impact the climate, Logitech has neutralized carbon emissions across operations and its value chain since 2021.

ENVIRONMENTAL PERFORMANCE

We are guided by and aligned with a number of environmental initiatives, including the Responsible Business Alliance (RBA) Code of Conduct, the Science-Based Targets Initiative (SBTi), 1.5°C Paris Agreement, and the Ten Principles of the UNGC in the areas of Human Rights, Labor, Environment, and AntiCorruption.

LOGITECH REFURBISH PROGRAM

OVER
67,000+
DEVICES HAVE BEEN
REFURBISHED
AT LOGITECH SINCE 2021

OUR GOALS

CLIMATE
POSITIVE
BY
2030

CARBON
FOOTPRINT
LABEL BY
2025

SOLUTION PORTFOLIOS

DIVERSE NEEDS, TAILORED SOLUTIONS

Everyone works differently. Choose portfolios of products designed for different user needs: Advanced, Core, Ergo, and Value.



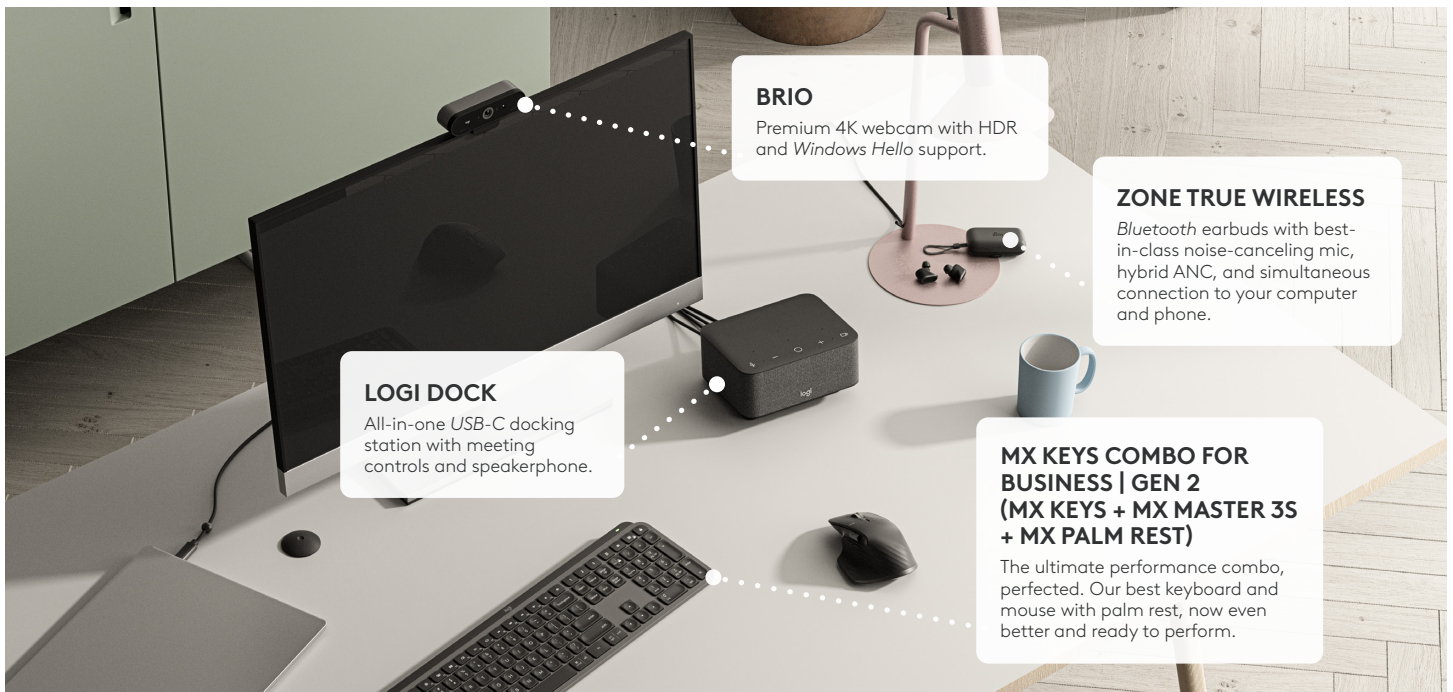
ADVANCED PORTFOLIO FOR EXECUTIVES

**Premium Workstation.
Premium Experience.**

The Advanced Portfolio is perfect for senior management roles such as C-suite executives. They need the best tools that allow them to sharpen work focus and achieve high-performance from anywhere.

OUR SOLUTION

Provide executives with the best tools that feature advanced technologies, built with solid, quality materials.



RELATED PRODUCTS



MX KEYS MINI FOR BUSINESS



MX ANYWHERE 3S FOR BUSINESS



SPOTLIGHT PRESENTATION REMOTE

SOLUTION PORTFOLIOS



ADVANCED PORTFOLIO

Pro Tools For Pro Work

The Advanced Portfolio includes top-of-the-line products in our personal workspace solutions. Most of the users of this solution are in specialized roles such as developers, analysts, and creatives. They need productivity tools that give them a high degree of control and precision, with innovations that enable them to streamline workflow and achieve excellence.

OUR SOLUTION

Boost productivity for specialized workflow needs. Equip skilled professionals with a 4K Ultra HD webcam, a premium headset with hybrid ANC, and customizable mice and keyboards with precise scrolling and typing.



RELATED PRODUCTS



MX KEYS MINI FOR BUSINESS



MX ANYWHERE 3S FOR BUSINESS

SOLUTION PORTFOLIOS



CORE PORTFOLIO

Achieve More With Less Effort

The Core Portfolio supports the broadest type of roles within any business organizations. From financial analysts to marketing experts, these employees require high-quality tools that enhance their work productivity. This portfolio checks all the boxes for IT and AV hardware buyers and supports their goal to enable employees to work more efficiently.

OUR SOLUTION

Elevate employee experience in the workplace. Promote better collaboration with a Full HD webcam, a wireless headset with noise-canceling microphone, and a keyboard and mouse combo with customizable shortcut keys and buttons.



BRIO 505
Full HD 1080p webcam with auto light correction, auto-framing, and Show Mode.

LOGI DOCK
All-in-one USB-C docking station with meeting controls and speakerphone.

SIGNATURE MK650 COMBO FOR BUSINESS
A wireless and comfortable keyboard and mouse combo with customizable shortcuts and buttons.

ZONE VIBE WIRELESS
Over-the-ear headphones with multipoint Bluetooth and noise-canceling microphone.

RELATED PRODUCTS



ZONE WIRED
EARBUDS



ZONE WIRED



BRIO 305

SOLUTION PORTFOLIOS



ERGO PORTFOLIO

Choose Employee Wellbeing

Our Ergo Portfolio addresses healthy workplace goals and allows you to standardize on Logitech devices across your organization. Employees interested in ergonomic devices include a wide variety of people who want a healthy workspace.

OUR SOLUTION

Offer employees with science-driven ergonomic devices that promote workplace wellbeing, such as an easy-to-use wave keyboard that offers natural typing posture and a vertical mouse that's available in right and left. For more comfortable meeting experience, get your employees a webcam placed at the eye-level and wireless lightweight headphones.



LIFT FOR BUSINESS

A vertical mouse at 57° angle offers natural handshake position and improves comfort. It is designed for small to medium-sized hands and available in left and right.

WAVE KEYS FOR BUSINESS

A wireless ergonomic keyboard with a wave design and cushioned palm rest that is easy to use and promotes natural typing posture.

BRIO 305

A simple-to-use, 1080p webcam improves meeting experience and working posture when placed on the monitor.

ZONE VIBE WIRELESS

Lightweight wireless headphones ensure clear video meetings and hours of comfort.

RELATED PRODUCTS



M575 WIRELESS TRACKBALL FOR BUSINESS



ERGO K860 SPLIT KEYBOARD FOR BUSINESS



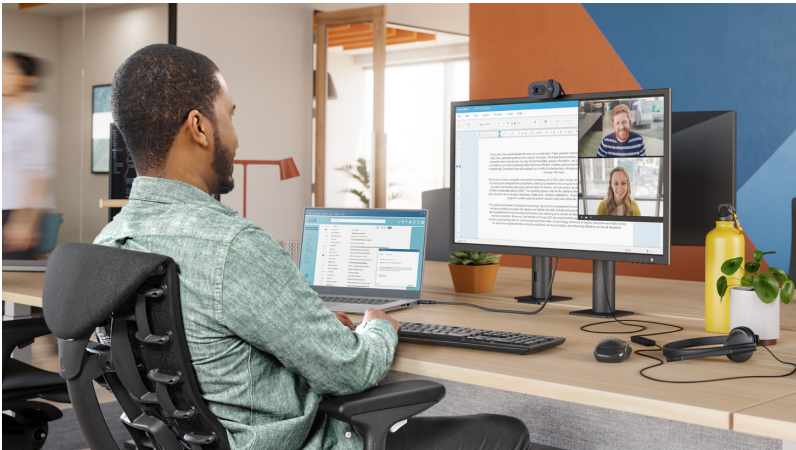
MX KEYS MINI FOR BUSINESS

SOLUTION PORTFOLIOS

VALUE PORTFOLIO

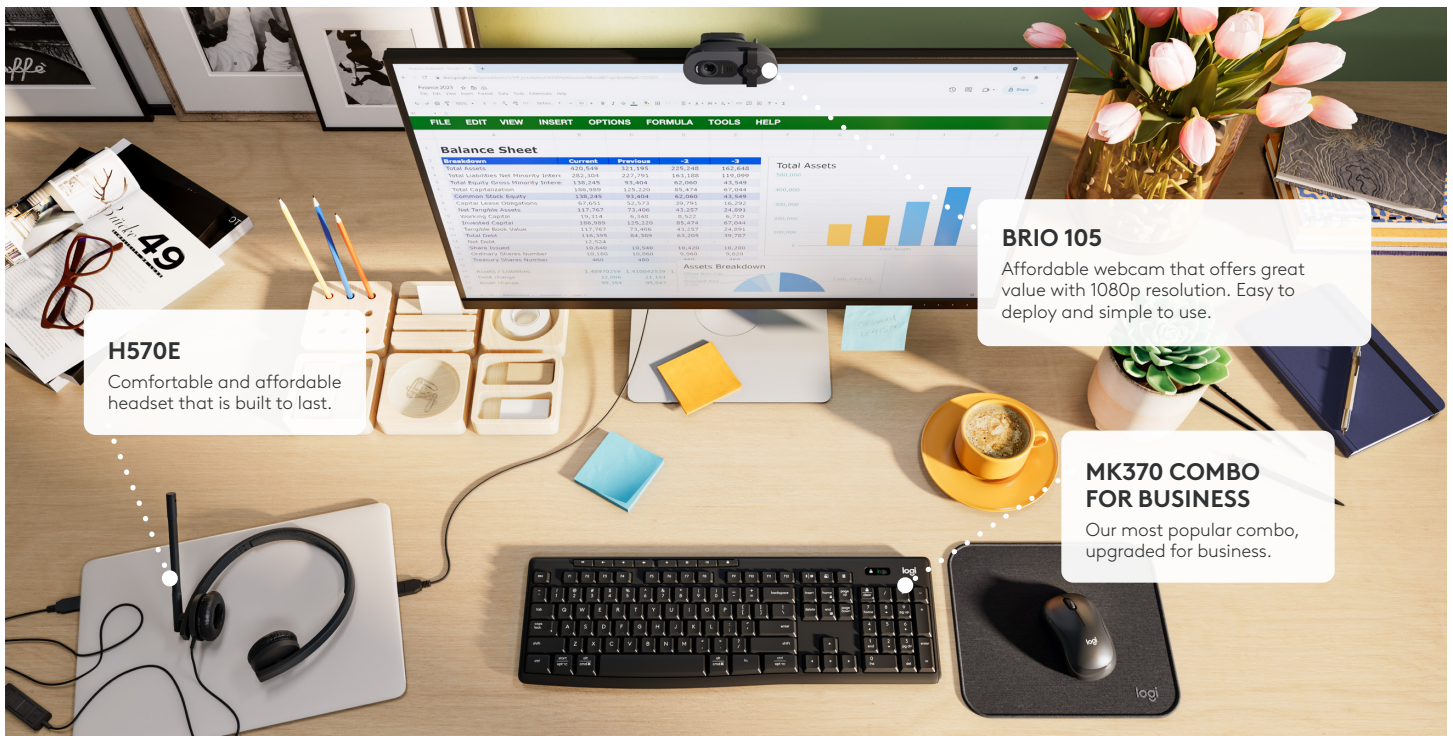
Workplace Essentials At Great Value

The Value Portfolio is the entry point of our personal workspace solutions. Most of the users of this solution are in operational, administrative, and contract roles. They are looking for products that are reliable, durable, and intuitive. Our products from this portfolio make tasks easier, save time, and enable employees to get more done with minimal learning curve.



OUR SOLUTION

The budget-friendly Value Portfolio of products are great choices for companies of all sizes, offering core users essential devices such as an HD webcam, a USB headset, and a wireless keyboard and mouse combo at affordable prices – without sacrificing quality.



H570E
Comfortable and affordable headset that is built to last.

BRIO 105
Affordable webcam that offers great value with 1080p resolution. Easy to deploy and simple to use.

MK370 COMBO FOR BUSINESS
Our most popular combo, upgraded for business.

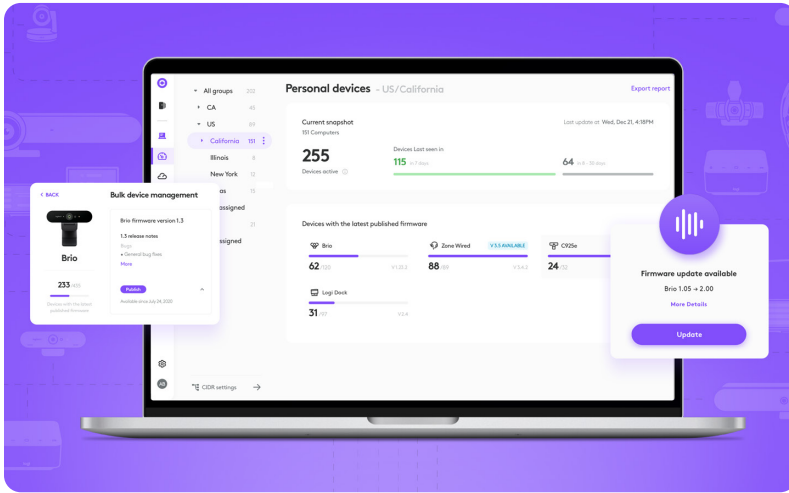
RELATED PRODUCTS



SOFTWARE

Software enhances Logitech products by ensuring a consistent, unified, and customizable experience across the distributed workforce.

MANAGEABILITY



LOGITECH SYNC

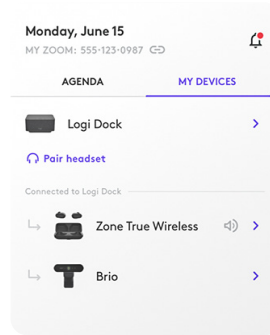
Sync works alongside your service provider admin tool to help you deploy and manage your entire device ecosystem². Whether employees are in the office, at home, or somewhere else, Sync helps everyone stay connected by ensuring their Logitech personal workspace solutions are healthy and up to date.

CUSTOMIZATION



LOGI OPTIONS+

Powerful, easy-to-use, next-gen application that enables customization for Logitech mice and keyboards so your team can work how they want.



LOGI TUNE

Puts settings for webcam, headset, and Logi Dock at the user's fingertips for more focused and productive collaboration.

ELEVATE YOUR PERSONAL WORKSPACES

Logitech designs personal workspace solutions that make equitable working experiences possible for everyone. We help teams work better together, from anywhere, without compromising on quality, productivity, or the creativity that comes from collaboration.

Contact your Logitech Account Rep for more information.

[logitech.com/business/personal-workspace](https://www.logitech.com/business/personal-workspace)

Refer to individual datasheets for product part numbers.

¹ In regions where available

² Requires Logi Tune downloaded on individual devices.

³ Enable Advanced Call Clarity on Logi Tune